

# SPEC SHEET + MEASUREMENTS

PORT AUTHORITY.

Port Authority® Tall Torrent Waterproof Jacket. TLJ333

## Product photo



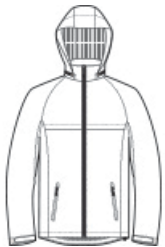
Our versatile, fully seam-sealed jacket offers outstanding waterproof protection to keep you dry whether you're on the job or on the trail. Folds into a convenient carry pouch for easy, compact storage.

- 100% polyester
- 100% polyester mesh-lined body and hood
- 5000MM fabric waterproof rating
- 3000G/M<sup>2</sup> fabric breathability rating
- Zip-off hood
- Contrast waterproof zippers
- Adjustable self-fabric tab cuffs with hook and loop closures
- Front zippered pockets
- Port Pocket™ for decoration access
- Open hem with locking drawcord for adjustability
- Drawstring carry pouch included

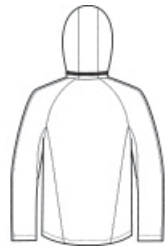
### CARE INSTRUCTIONS

Machine Wash Cold. Do Not Bleach. Cool Iron If Needed. Do Not Dry Clean.

## Sketches



front



back

# SPEC SHEET + MEASUREMENTS

PORT AUTHORITY

Port Authority® Tall Torrent Waterproof Jacket. TLJ333

## PRODUCT MEASUREMENTS

	LT	XLT	2XLT	3XLT	4XLT
Body Length at Back	32 1/2	33 1/2	34 1/2	35	35 1/2
Chest	25	26 1/2	28	30	32
Raglans and Dolmans Sleeve Length	39	39 3/4	40 1/2	41 1/4	42

**Body Length at Back:** Measured from high point shoulder to finished hem at back.

**Chest:** Measured across the chest one inch below armhole when laid flat.

**Raglans and Dolmans Sleeve Length:** Measure from neck edge to finished hem.

## SIZE CHARTS

	LT	XLT	2XLT	3XLT	4XLT
Chest	41-43	44-46	47-49	50-53	54-57

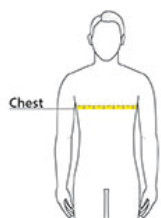
# SPEC SHEET + MEASUREMENTS

PORT AUTHORITY.

Port Authority® Tall Torrent Waterproof Jacket. TLJ333

## HOW TO MEASURE

---



### CHEST

Measure under the arm and around the fullest part of the chest with arms down, keeping tape horizontal.

## COLORS

---



Black  
PMS Black C



Magnet  
PMS COOL  
GRAY 11C



True Navy  
PMS 533C